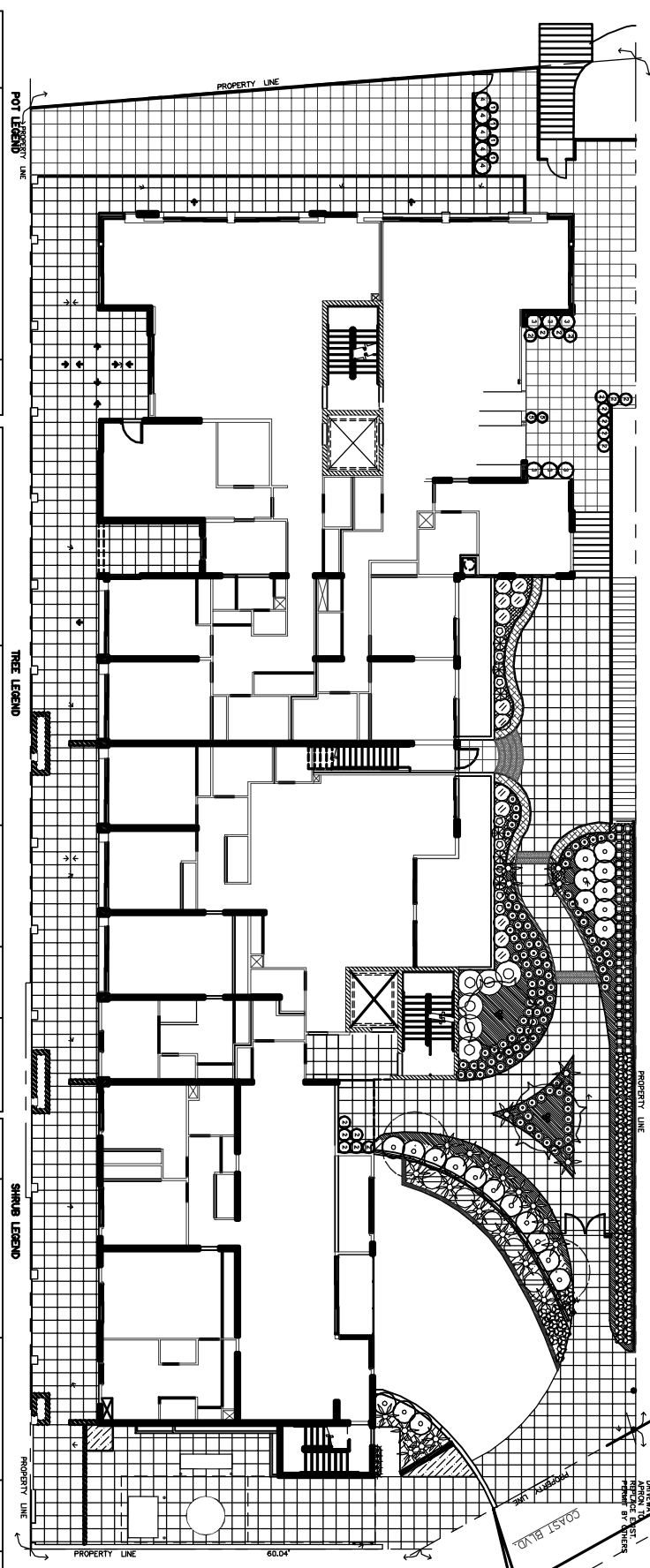


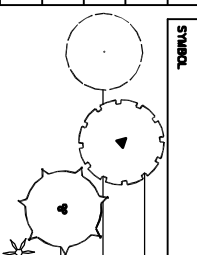
LANDSCAPE CONCEPT PLAN - NOT FOR CONSTRUCTION



| SYMBOL | BOTANICAL NAME | SIZE |
|--------|---|--------|
| ① | ROSMARINUS OFFICINALIS - 18" POT | 5 GAL. |
| ② | CORREA ALBA - 36" POT | 5 GAL. |
| ③ | HERBISUS WITH SPRING ANQUELOL - 36" POT | 5 GAL. |
| ④ | PITTOSPORIUM WITH ROSEMARY - 36" POT | 5 GAL. |
| ⑤ | AGAPANTHUS AFRICANUS - 18" POT | 5 GAL. |

NOTE:
 POTS TO BE GANEY CERAMICS AT THE FOLLOWING SCHEDULE:
 18" POT TO BE GANEY F-PR1-18, COLOR SEA MOSS
 36" POT TO BE GANEY F-PR1-36, COLOR PAPER MIST
 36" POT TO BE GANEY F-PR1-36, COLOR ASHED STONE
 POTS SHALL BE EQUIPPED WITH PLANTER TECHNOLOGY CONTAINER IRRIGATION SYSTEM AT THE SIZE SCHEDULE PROVIDED BY GANEY CERAMICS.

- NOTES:**
1. PLANT MATERIAL LARGER THAN 24" BOX SIZE SHALL BE INSTALLED AND PROTECTED PRIOR TO THE INSTALLATION OF HARDSCAPE.
 2. PLANTING AREAS SHALL BE EXCAVATED TO A DEPTH OF 3'-0" AND BACKFILLED WITH CLASS 'A' TOPSOIL WITH A SOILUM CONDITION AT THE LOWEST ACCEPTABLE RANGE.
 3. PAVING TYPE, SIZE AND PATTERN ARE TO BE SELECTED BY THE OWNER OR OWNER'S REPRESENTATIVE.
 4. SEE ARCHITECTURAL AND ENGINEERING DRAWING FOR DRAINAGE INFORMATION.
 5. IRRIGATION WILL BE BELOW GRADE, DRIP LINE TUBING THAT IS ZONED TO PROVIDED PROPER IRRIGATION FOR PLANT TYPE AND SUN LOCATION.
 6. SIGN SHALL PER SAN DIEGO SIGNS.
 7. PLANTING AND HARDSCAPE QUANTITIES, MATERIALS AND LOCATIONS ARE SUBJECT TO CHANGE WITHOUT NOTICE.



| SYMBOL | BOTANICAL NAME | COMMON NAME | ABBREVI. | SIZE |
|--------|---------------------------|-------------------|----------|-----------------|
| ○ | ARCHONTOPHYKX QUINCHAMANA | KING PALM | ACH QIN | 12' BTH |
| ○ | NEOBYRS DECURTI | TRIANGLE PALM | NEO DEC | RESTORE |
| ○ | PHIEXUS RECTANGIA | SPECIAL DATE PALM | PHO REC | RESTORE |
| ○ | PHIEXUS REEBELINI | PIGMY DATE PALM | PHO REC | RESTORE/24" BOX |

GROUNDCOVER LEGEND

| SYMBOL | BOTANICAL NAME | COMMON NAME | ABBREVI. | SIZE |
|--------|------------------------|-----------------|----------|-----------------|
| ▨ | PELARGONIUM PELTATIUM | IVY GERANIUM | N/A | PLANTS-12" O.C. |
| ▨ | POTENTILLA VERNA | SPRING ANQUELOL | N/A | PLANTS-12" O.C. |
| ▨ | ROSMARINUS OFFICINALIS | ROSEMARY | N/A | PLANTS-12" O.C. |
| ▨ | SAGINA SUBULATA | SCOTCH MOSS | N/A | PLANTS-12" O.C. |

| SYMBOL | BOTANICAL NAME | COMMON NAME | ABBREVI. | SIZE |
|--------|----------------|--------------|----------|--------|
| ○ | FICUS FUMIDA | CREATING FIG | FIG FUM | 5 GAL. |

SHRUB LEGEND

| SYMBOL | BOTANICAL NAME | COMMON NAME | ABBREVI. | SIZE |
|--------|---------------------------|--------------------------|----------|---------|
| ○ | AGAPANTHUS AFRICANUS | LILY OF THE Nile | AGA AFR | 5 GAL. |
| ○ | ALPINA SP. | TROPICAL GINGER | ALP SP | AVAIL |
| ○ | BEGONIA RICHMONDENSIS | BEGONIA | BEG RIC | 5 GAL. |
| ○ | BOUGAINVILLEA | BOUGAINVILLEA 'LA JOLLA' | BOU LAJ | 5 GAL. |
| ○ | CIVIA MINNANTA | VIETRI LILY | CI MIN | 5 GAL. |
| ○ | DETTES BICOLOR | FORNIGHT LILY | DE BIC | 5 GAL. |
| ○ | DETTES VERTIA | FORNIGHT LILY | DE VR | 5 GAL. |
| ○ | HERBISUS ROSA-SINGENSIS | HERBISUS | HB ROS | 5 GAL. |
| ○ | EUROPE 'ORANTIVA' | BIG BLUE LILY TUBE | EU OIG | 5 GAL. |
| ○ | PITTOSPORIUM CRASSIFOLIUM | PITTOSPORIUM | PT CRA | 5 GAL. |
| ○ | STREPTILITIA NICOLAI | GIANT BRD OF PARADISE | STR NIC | 15 GAL. |
| ○ | GARDENIA JASMINODES | GARDENIA | GAR JAS | 5 GAL. |
| ○ | CESTRALIA NOCTURNUM | NIGHT BLOOMING JASMINE | CES NOC | 5 GAL. |
| ○ | HELICONIA SP. | TROPICAL HELICONIA | HEL ANG | AVAIL |



ELP: PROJECTS/31203/6_GLCP.DWG JUNE 6, 2002

BO: JUNE 02
 NEW SHEET
 GARDENIA JASMINODES
 TROPICAL GINGER
 TROPICAL HELICONIA
 PREPARED BY: GARDENIA